

# LET'S LEARN STEP UP AND SPEAK OUT!

## How to use this program

### What's the issue?



This section is for the leader to read. Since GFS membership begins at 5 years old, the issues presented in this program are accessible to our youngest members. Leaders can add more depth for older members by expanding on the “What do we already know” discussions, using additional resources on each topic, and utilizing the “Dig Deeper” section.

The leader uses her discretion to determine when the badge is earned.

### What do we already know?

The questions in this section are meant for use by the leader “get the juices flowing”. Have the members noticed this issue? What is their understanding of the complexity of the issue? Can you get them to think more deeply about the issue?

Use your judgement to decide which questions to use. Add more that come to mind and to further the discussion. Issues of race and gender can become a part of every discussion.

Comprehension will increase and deepen if discussions take place over several meetings. If only one meeting is held on the issue, do a wrap-up discussion at the end of the meeting to see what has been learned.

Watch *What is Social Justice?* on YouTube to refresh your understanding of social justice and the ground rules for respectful discussions. <https://youtu.be/1SV5KiHFrA>

### Facts and Words to Know

The statistics in this section are for the leader to become acquainted with the extent of the issue at hand. If desired, the leader can find different or more relevant statistics through her own research. *Citations can be provided upon request.*

Words to know can be defined as needed by the leader. Appropriate terminology changes with the times, so try to stay current!

Avoid using labels like “the poor” or “the needy”. Instead say “people who need some help”.

### Experiential learning

The suggestions in this section are meant to help members develop empathy for the issue. Experiencing what it is like to be older, hungry or challenged will provide members with a touchpoint to relate to others.

## First Foot Acts of Charity

### Ideas for Charity

The ideas listed here are hands-on charity projects. The leader is not limited to using these ideas, these are jumping off points. Use the internet for how-to info on the projects listed.

Avoid projects which are collections of items or money unless the members fully understand why this is being done. Instead, choose projects which involve their hands.

Children generally do one thing at a time. However, with more mature children, discussion can occur during activity time.

## Second Foot Acts of Justice

### Ideas for Justice

The ideas listed here help members get to the root of the problem.

Think of a tree. The roots of the tree represent the cause of the problem. The branches represent the effects of the problem.

Critical thinking skills developed during this step will help children process difficult issues and use their influence to change their community.

## What are the 2 Feet of Love in Action?

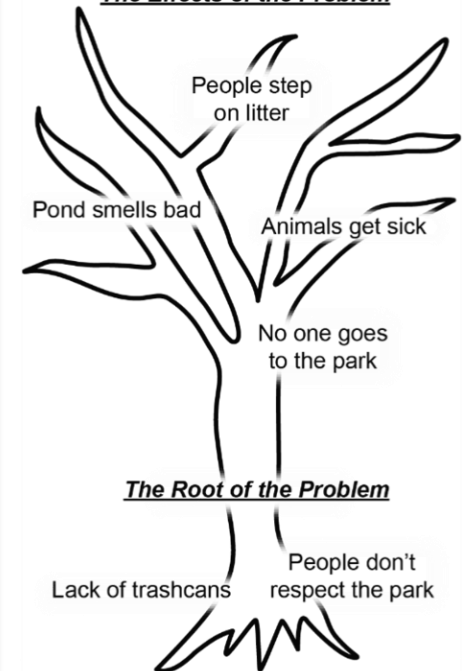
When someone needs our help, we use both of our feet to be love in action. **Charity** is to help with immediate needs (attention, food, medication), **justice** is to find the root of the problem and work to make change.

### Resources

**Learning to Give** – a site with good direction on teaching philanthropy to children  
<https://www.learningtogive.org>

*Problem: Polluted Neighborhood Park*

### The Effects of the Problem



## What's next?

### You can Dig Deeper or Lighten it Up!



#### Faith Connections

Use this opportunity to connect social justice to the Bible.

Make a connection to the GFS Motto "Bear Ye One Another's Burdens"

What does Biblical justice call us to do?

Ideas in this section allow older members to go deeper and attempt more challenging projects and/or more sophisticated justice.

#### Lighten It UP!

The ideas listed in this section have are fun and have some relationship to the topic.

Since this program tackles serious issues, so it important to also have fun together.

The pillars of GFS are *worship, study, service and recreation*. Do your best to balance these aspects.

Before awarding the badge, have a wrap-up discussion to bring all your work together!

A program provided by GFS in the Diocese of Los Angeles (2021)