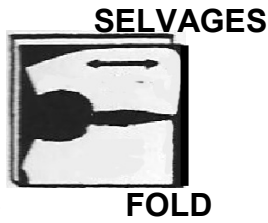


GFS Vest

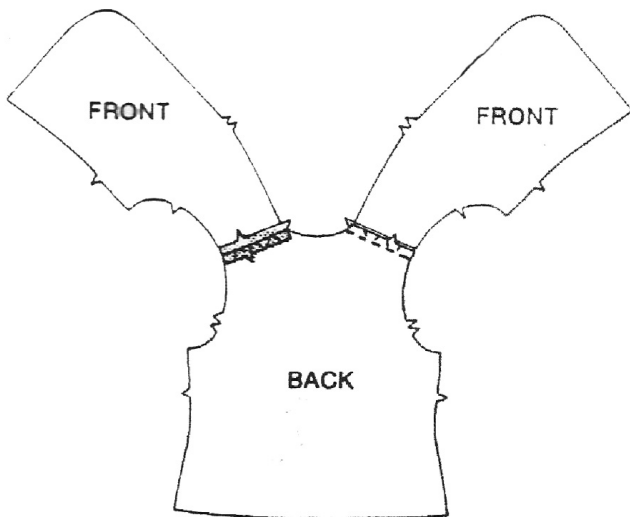
Fabric amount needed in each color for these sizes: Small 3/4 yard, Medium 7/8 yard, Large 1 yard
Suggested fabrics: Navy, Ultima Poplin; White, Maxima Poplin

44/46" (115 cm)
FABRIC
WITH OR
WITHOUT NAP
FOR SIZES
Small Medium Large



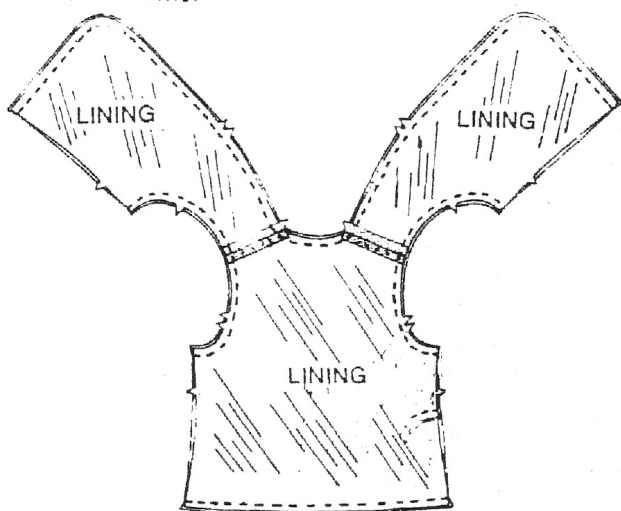
STEP 1 - FRONT AND BACK

Stitch **FRONTS** to **BACK** at shoulders, slightly easing back to fit.



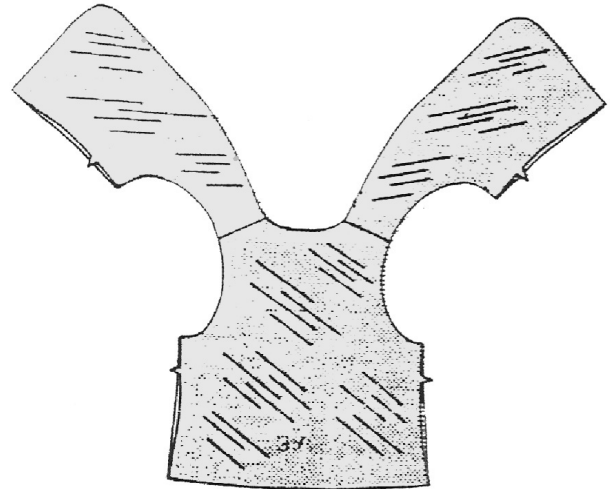
STEP 2 - LINING

Make **LINING** same as Vest.
With right sides together, pin lining to vest, matching seams and having raw edges even.
Stitch along front opening, neck, lower and arm hole edges. Trim and clip seams.

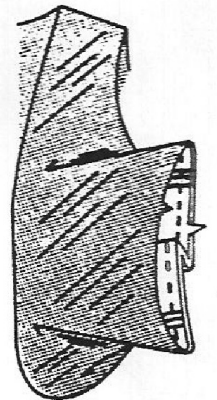


STEP 3 - TURN LINING

Turn lining to inside by pulling fronts through shoulders and out one side opening in back.
Press.



Starting 2" (5cm) above armhole seam and ending 2" (5cm) below seam at lower edge, stitch fronts to back and lining edges together in one continuous seam.



Turn in remaining edges of lining along seamlines. Slip-stitch edges together over seam.

